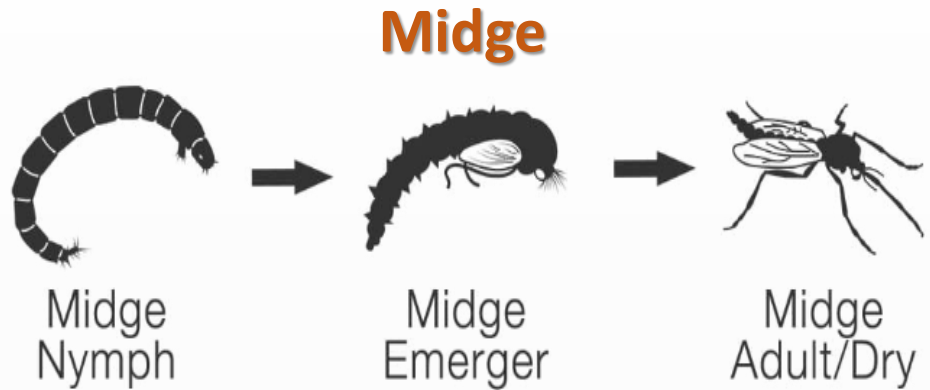


A man with a mustache, wearing a cap, sunglasses, and a fishing vest, stands in a river holding a trout. He is smiling and looking towards the camera. The river is flowing over rocks, and the background is a dense forest.

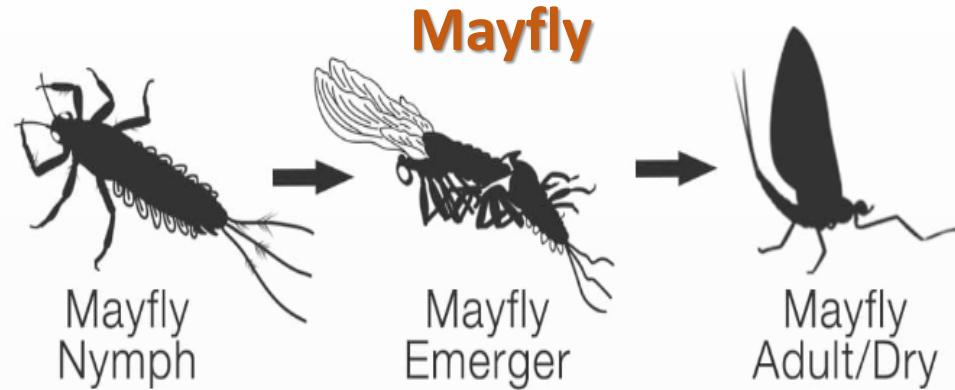
Insights Into a “Bug Buffet” for North Georgia Trout

- Jeff “Dredger” Durniak -
*With color commentary from
Chris & Mike*

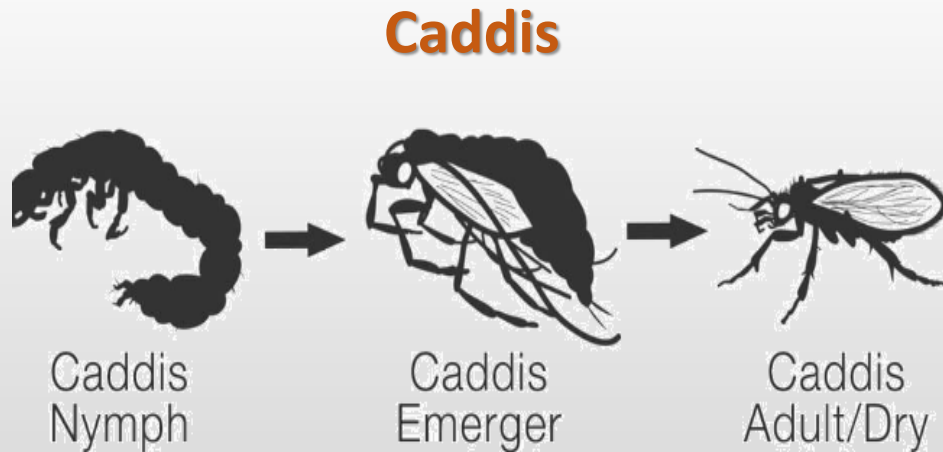
Four Biggies Here in North Georgia



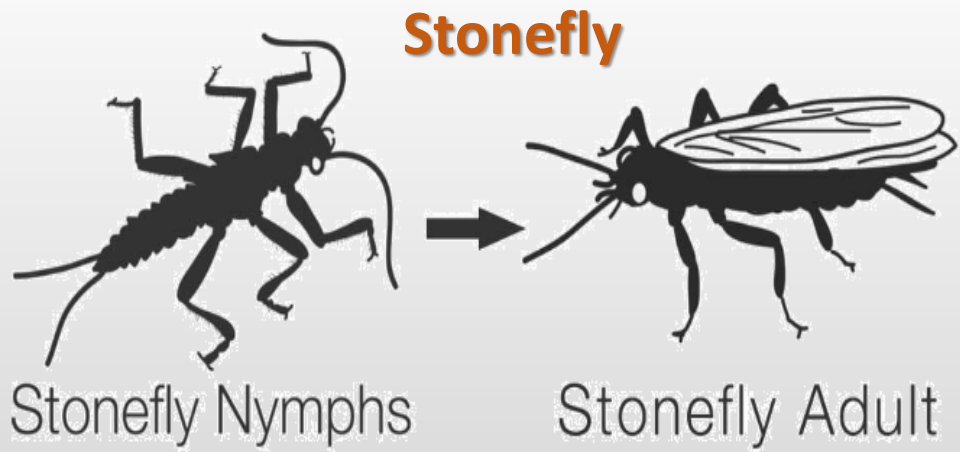
© The Catch and The Hatch



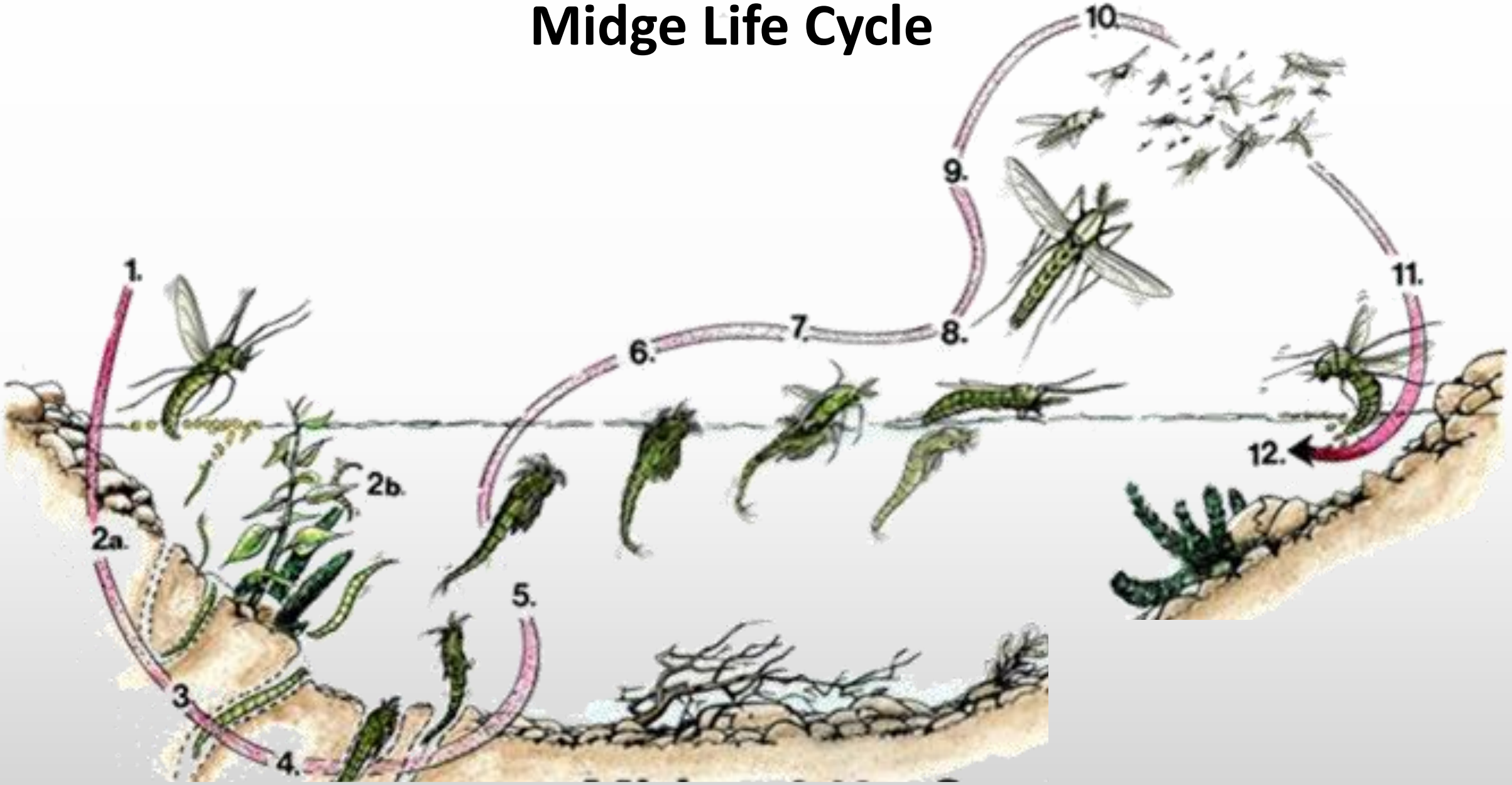
© The Catch and The Hatch



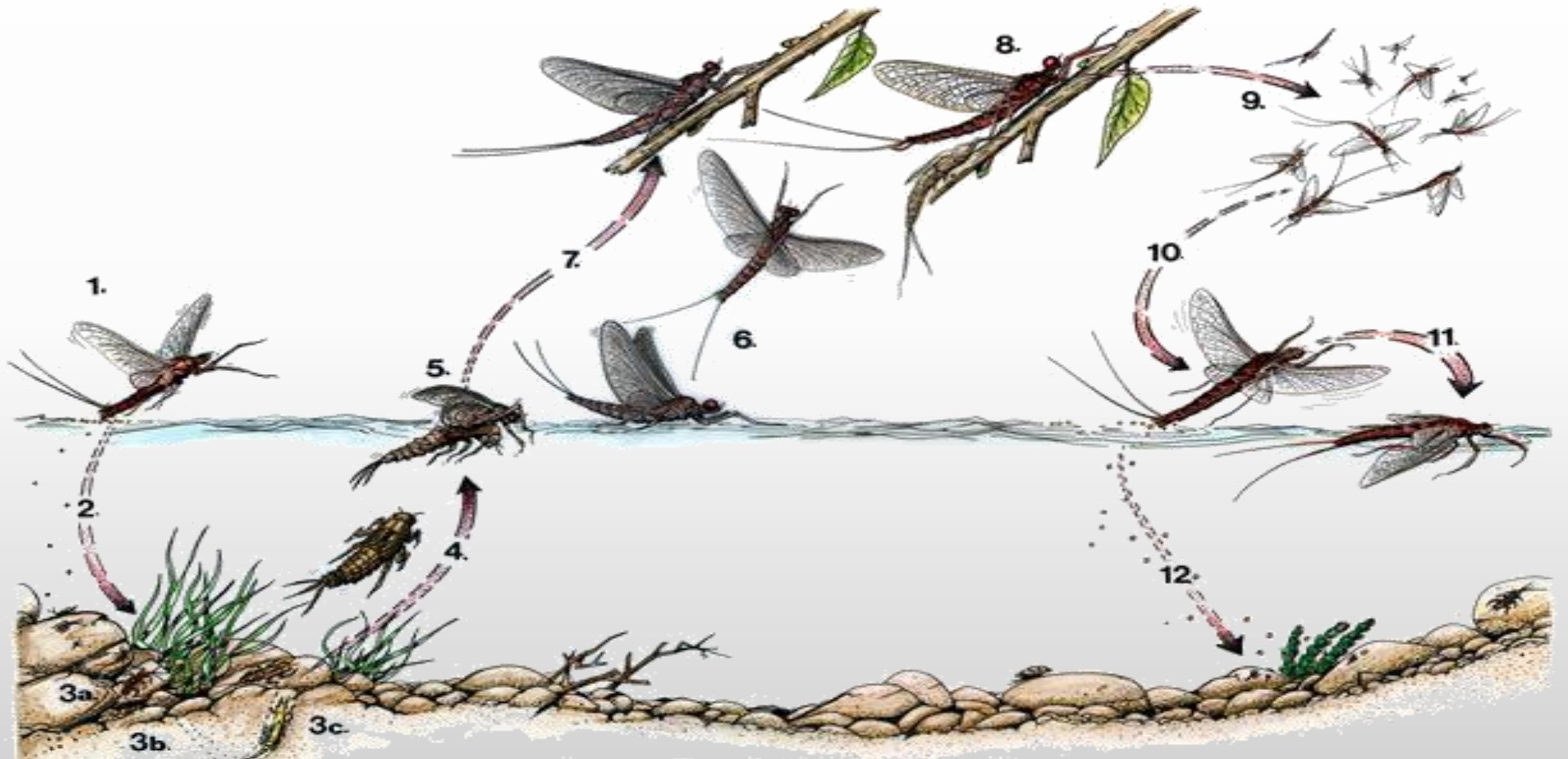
© The Catch and The Hatch



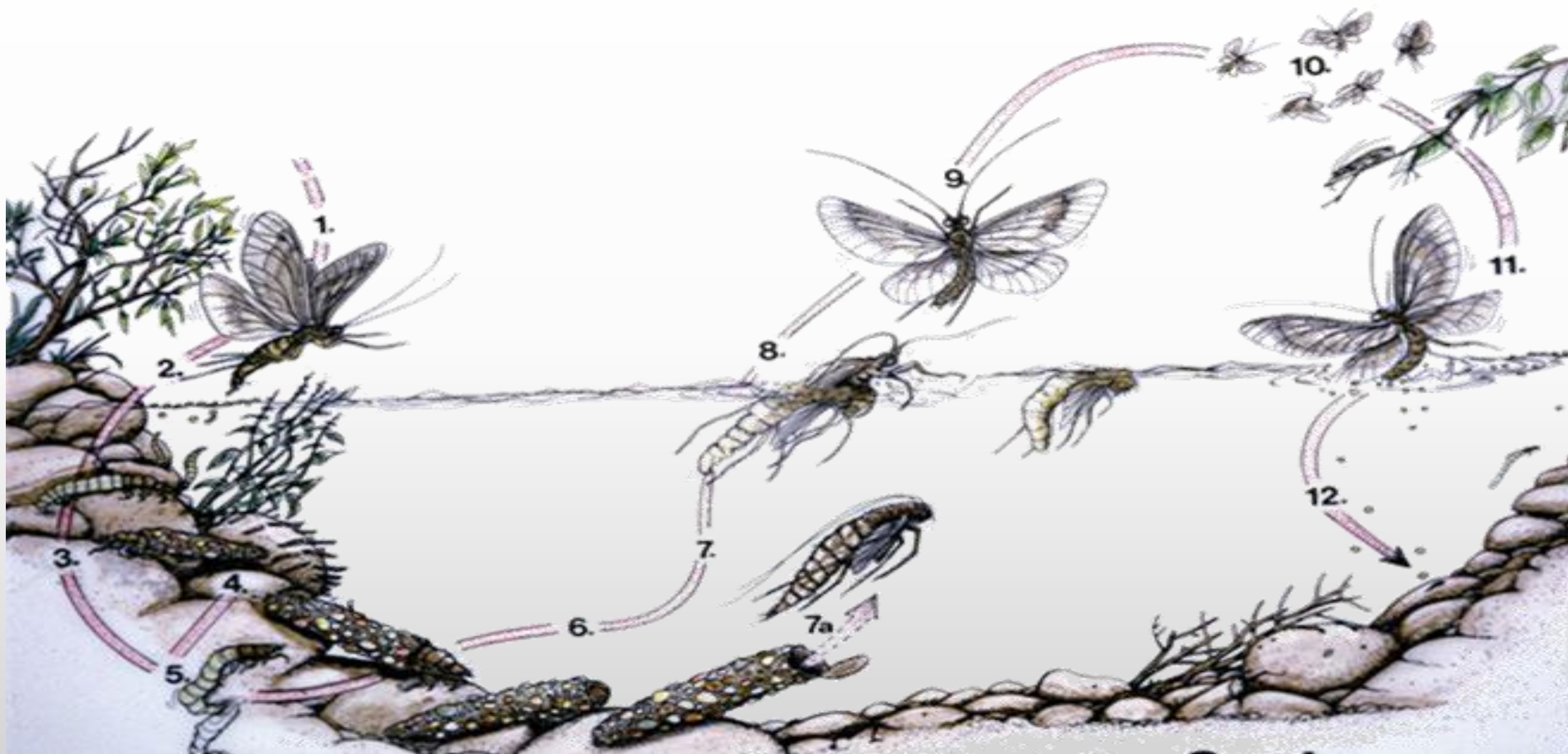
Midge Life Cycle



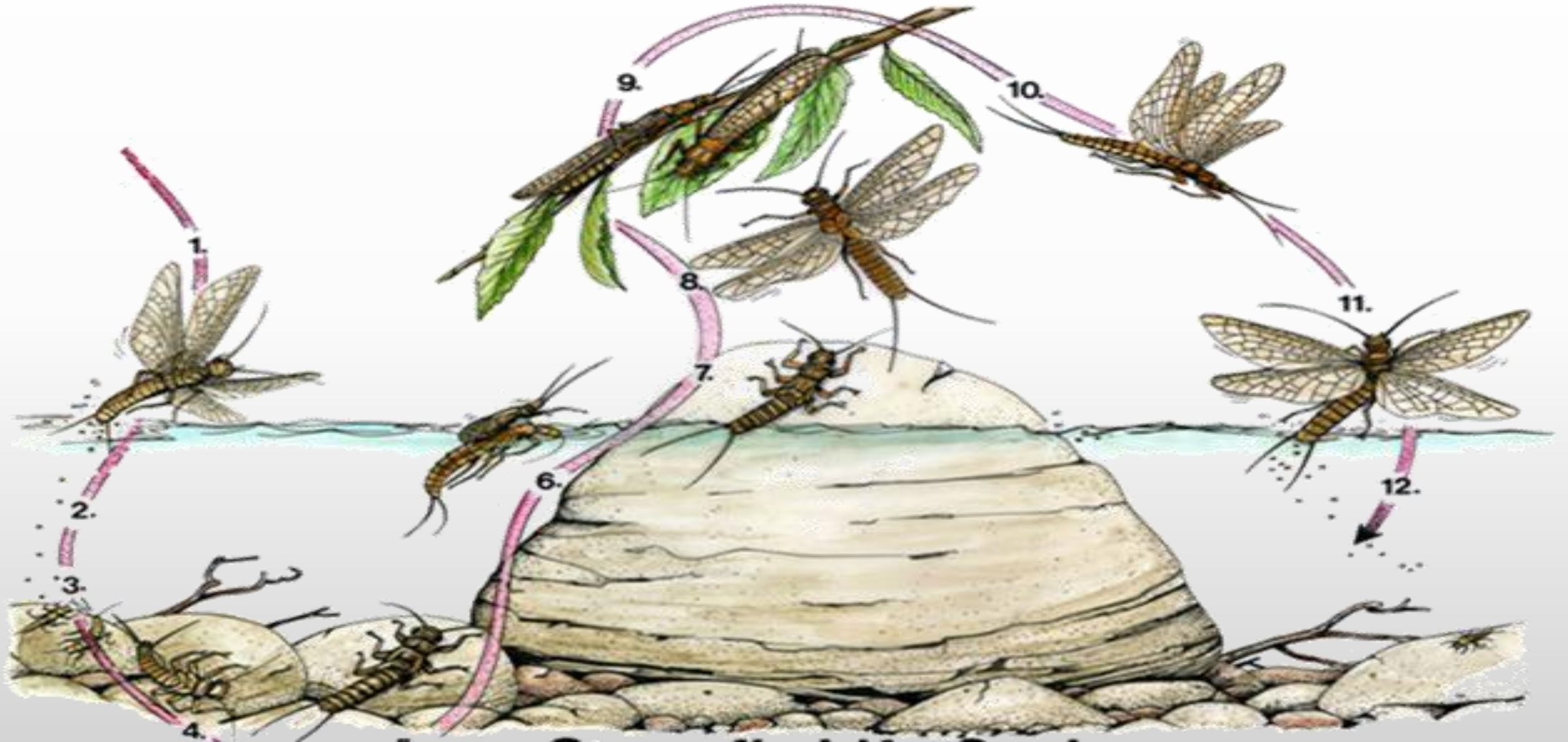
Mayfly Life Cycle



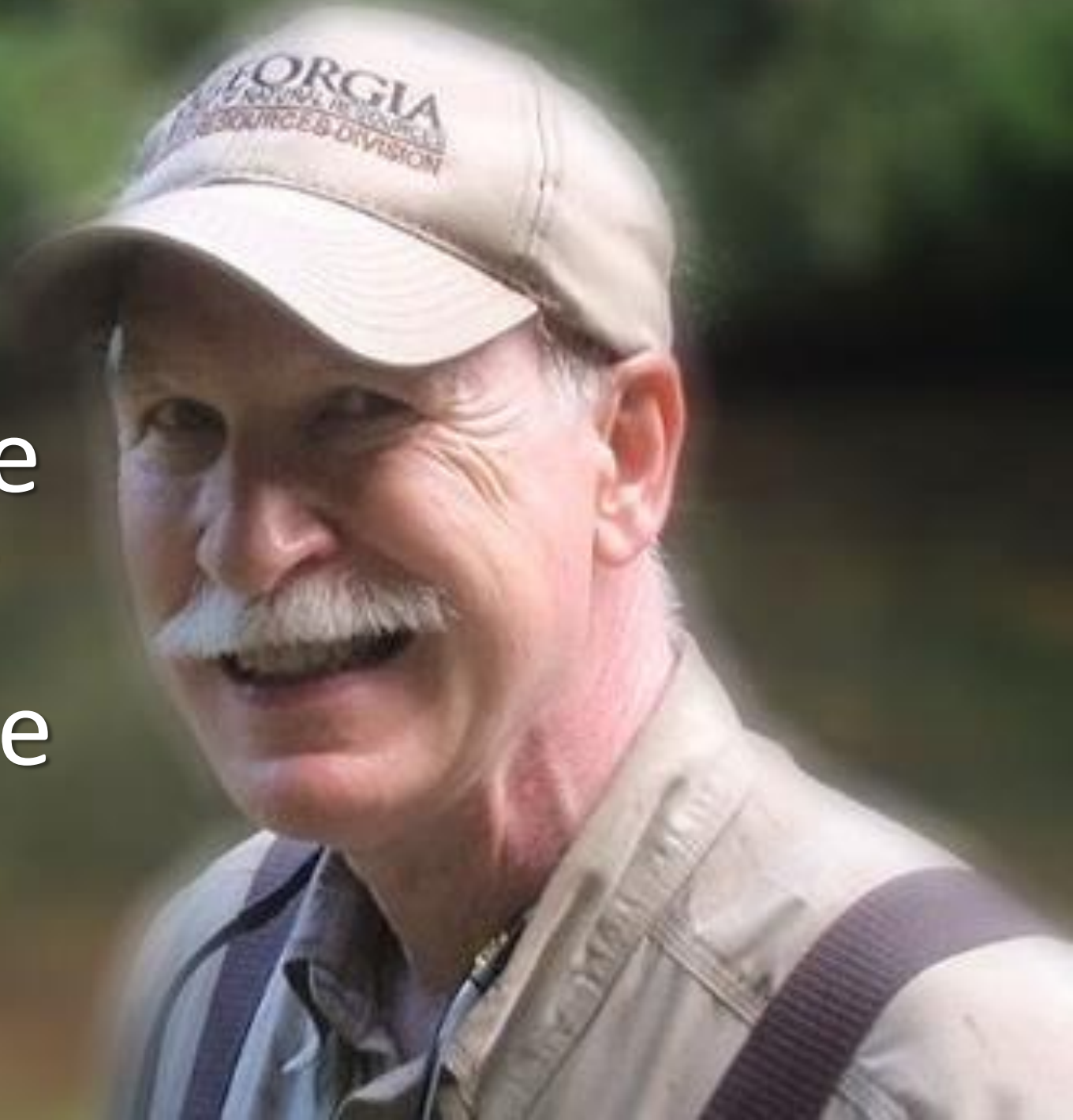
Caddis Life Cycle



Stonefly Life Cycle



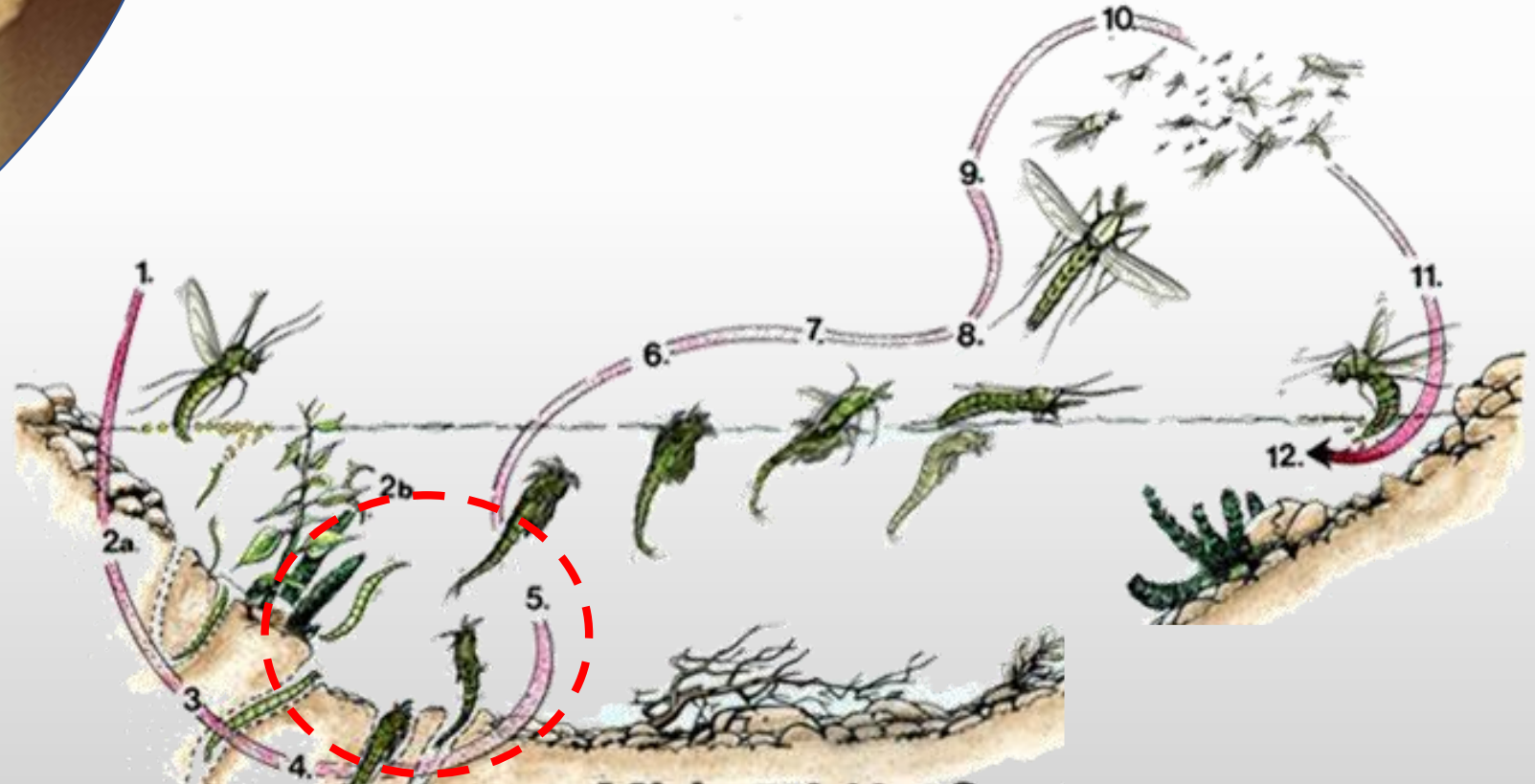
The “*Imposters*”
We Use to Emulate
Various Stages of
Each Bug’s Lifecycle





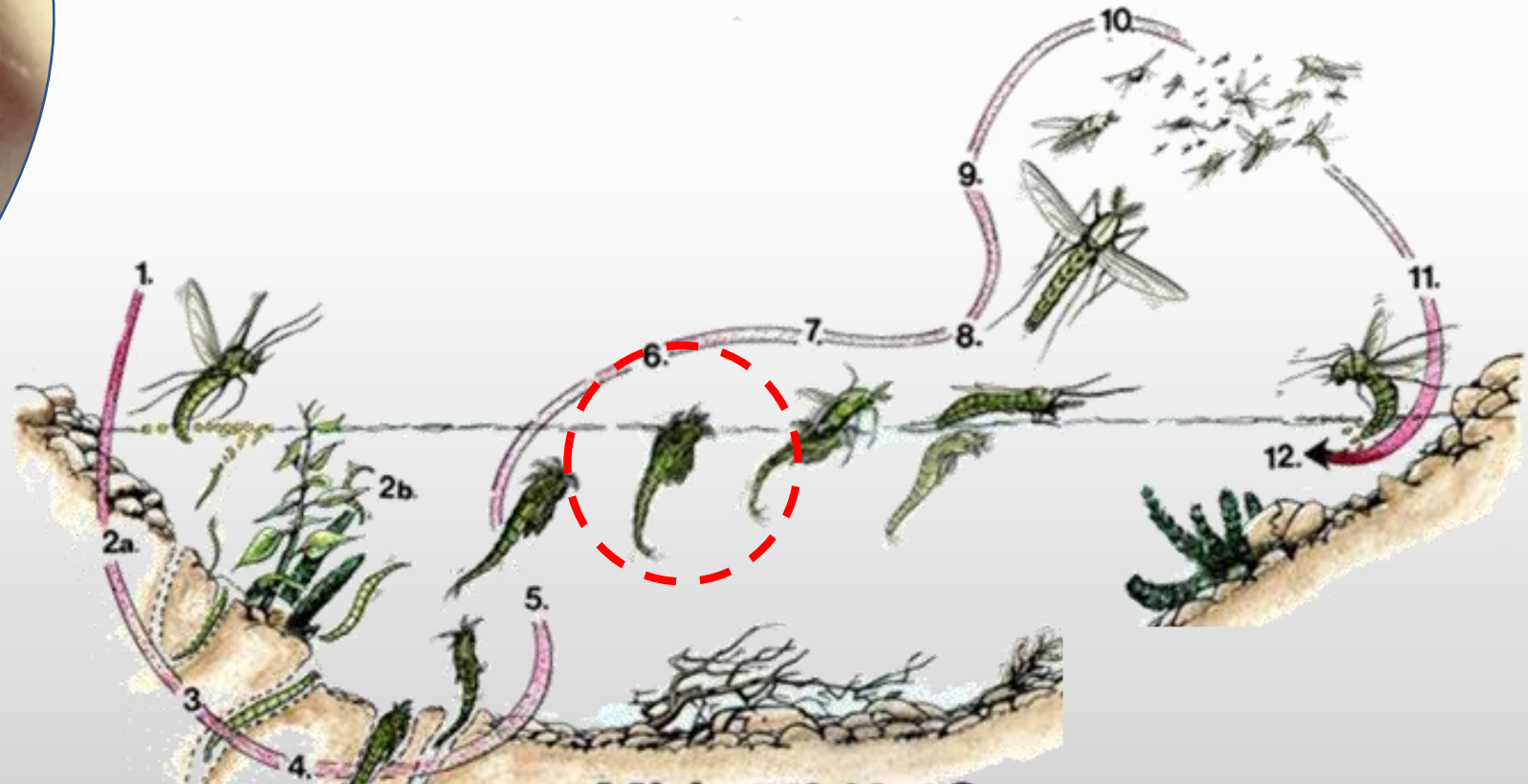
Midge Imposters

Nymph Stage - Zebra



Midge Imposters

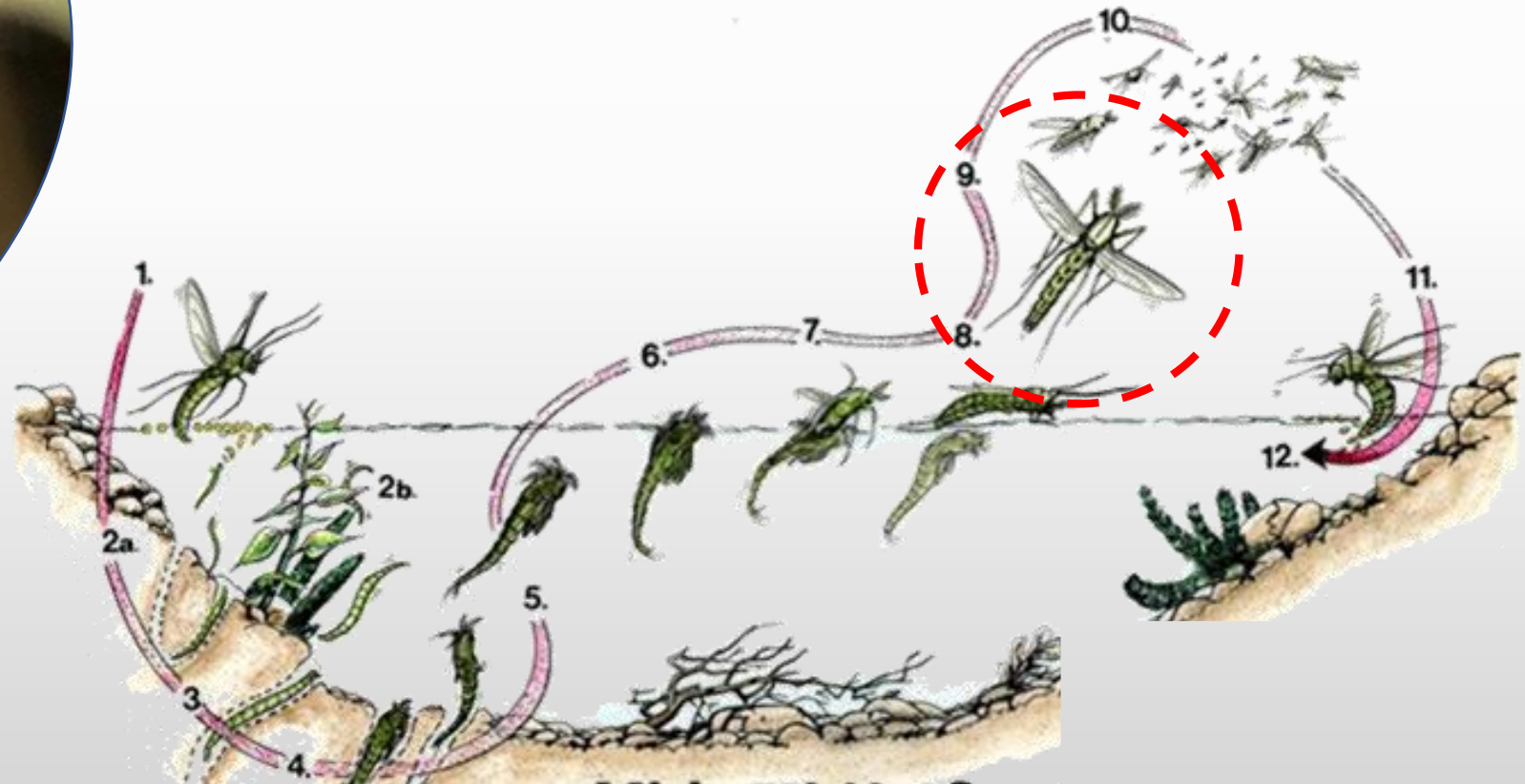
Emerging Stage - Smoke Jumper





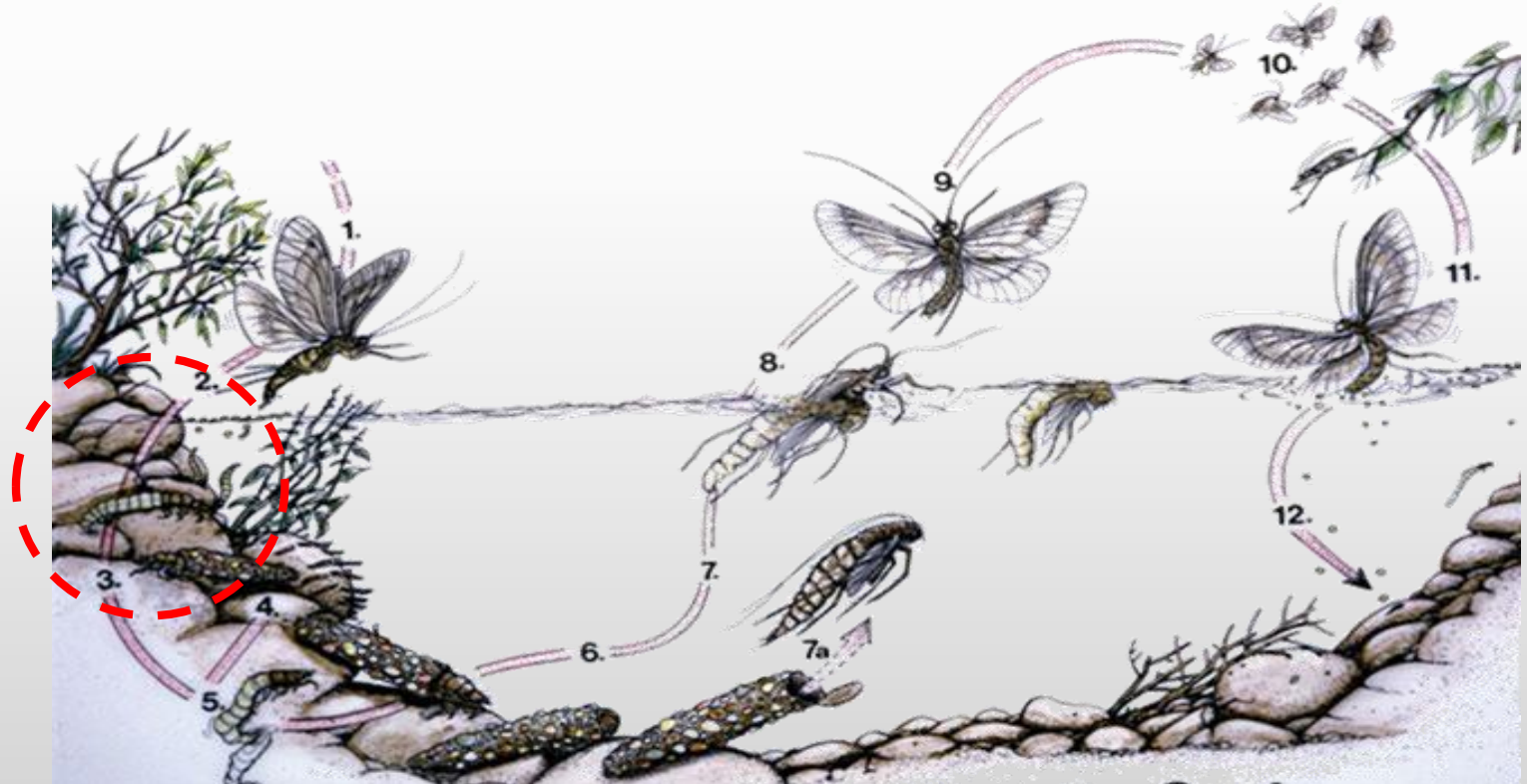
Midge Imposters

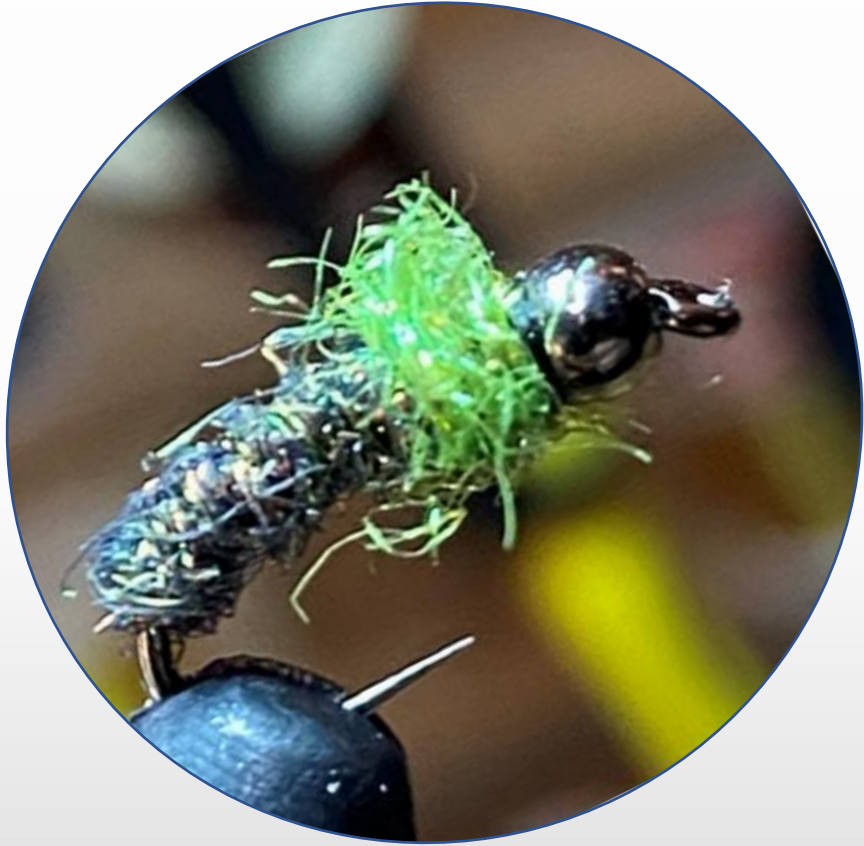
Adult Stage Dry Fly – Poly Wing



Caddis Imposters

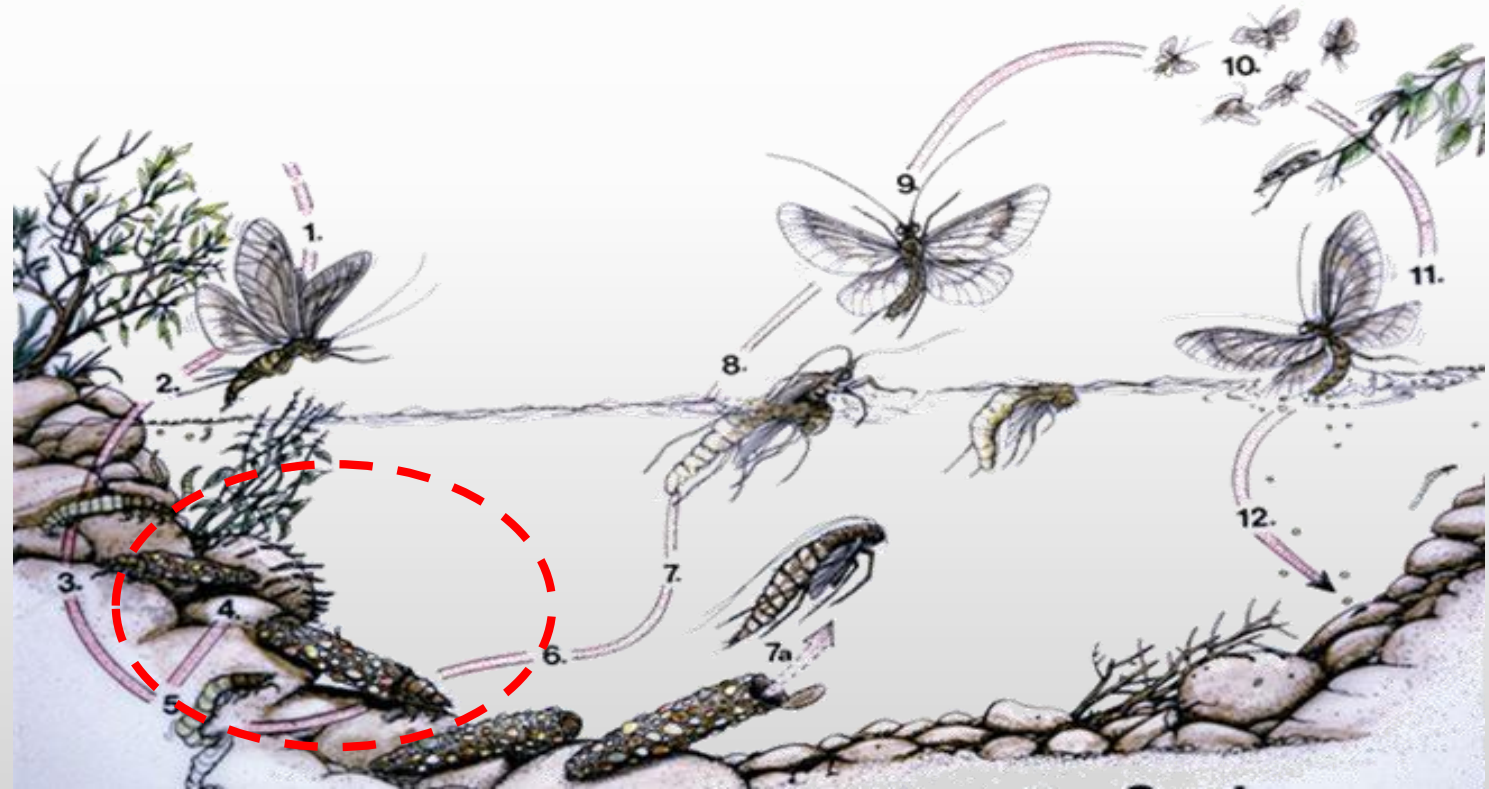
*Free Living Larva Nymph Stage –
Cream Bead Head*





Caddis Imposters

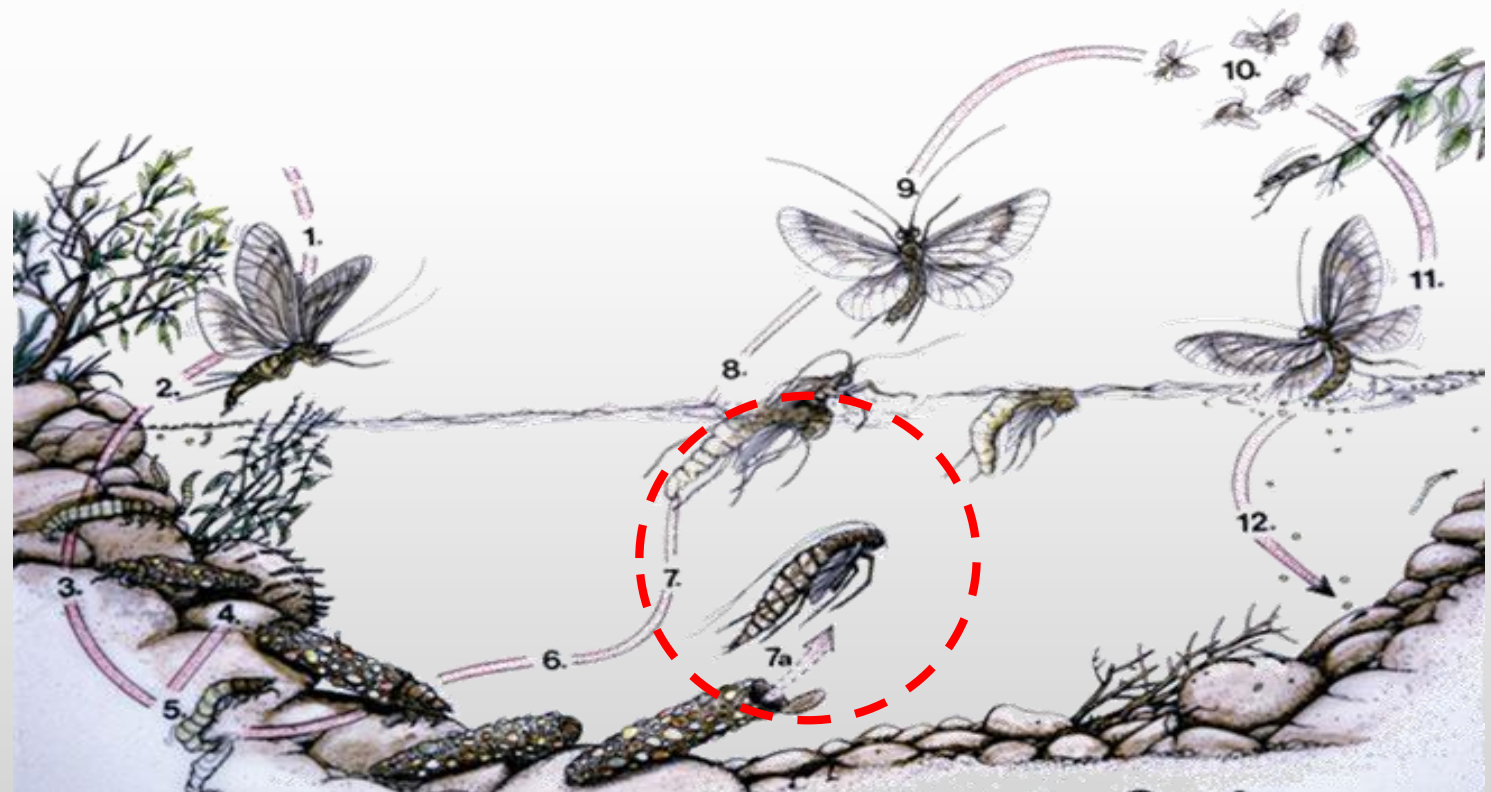
Larva Nymph Stage – Cased Caddis





Caddis Imposters

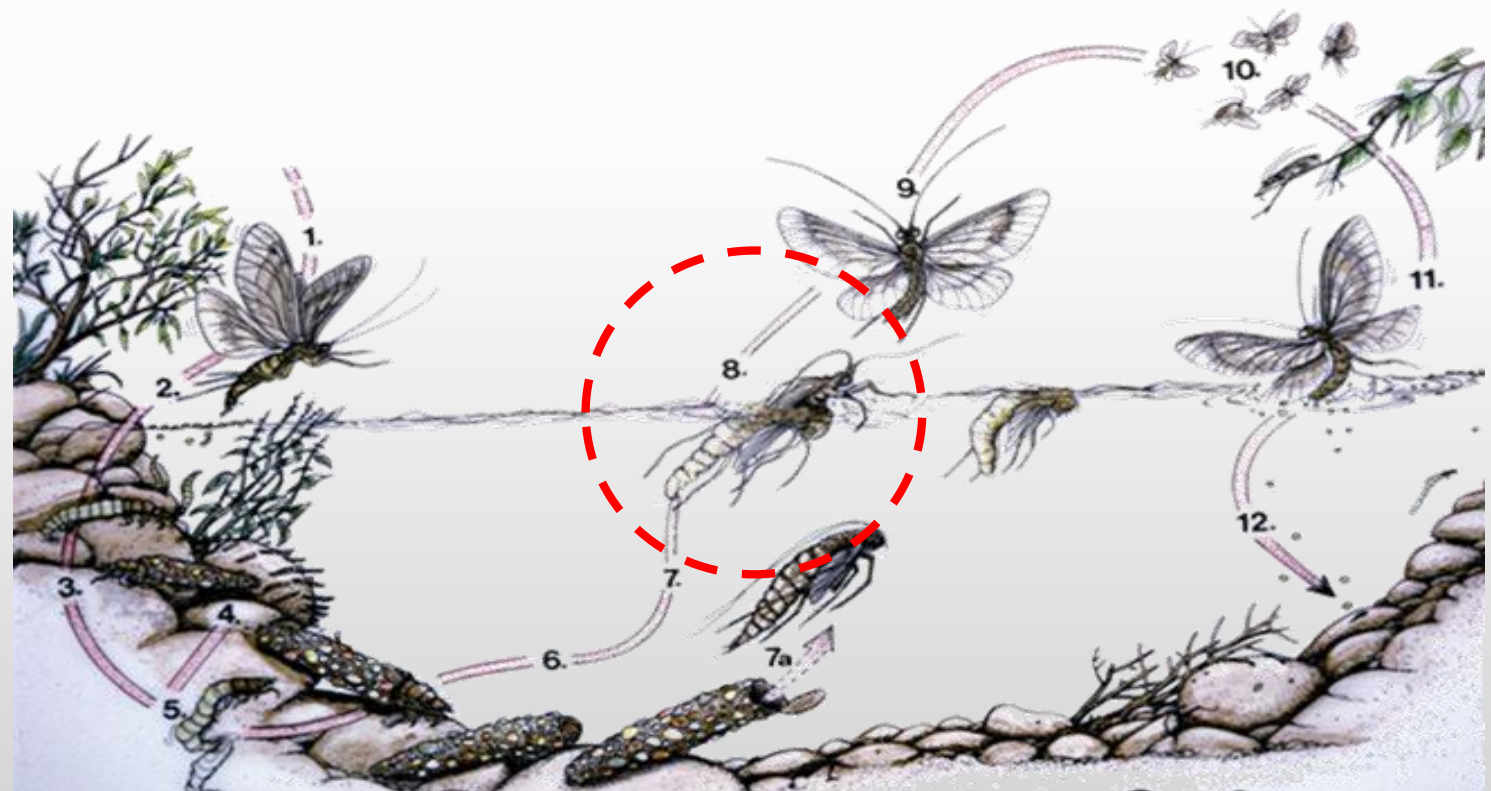
Emerger Stage – Hare's Ear Soft Hackle





Caddis Imposters

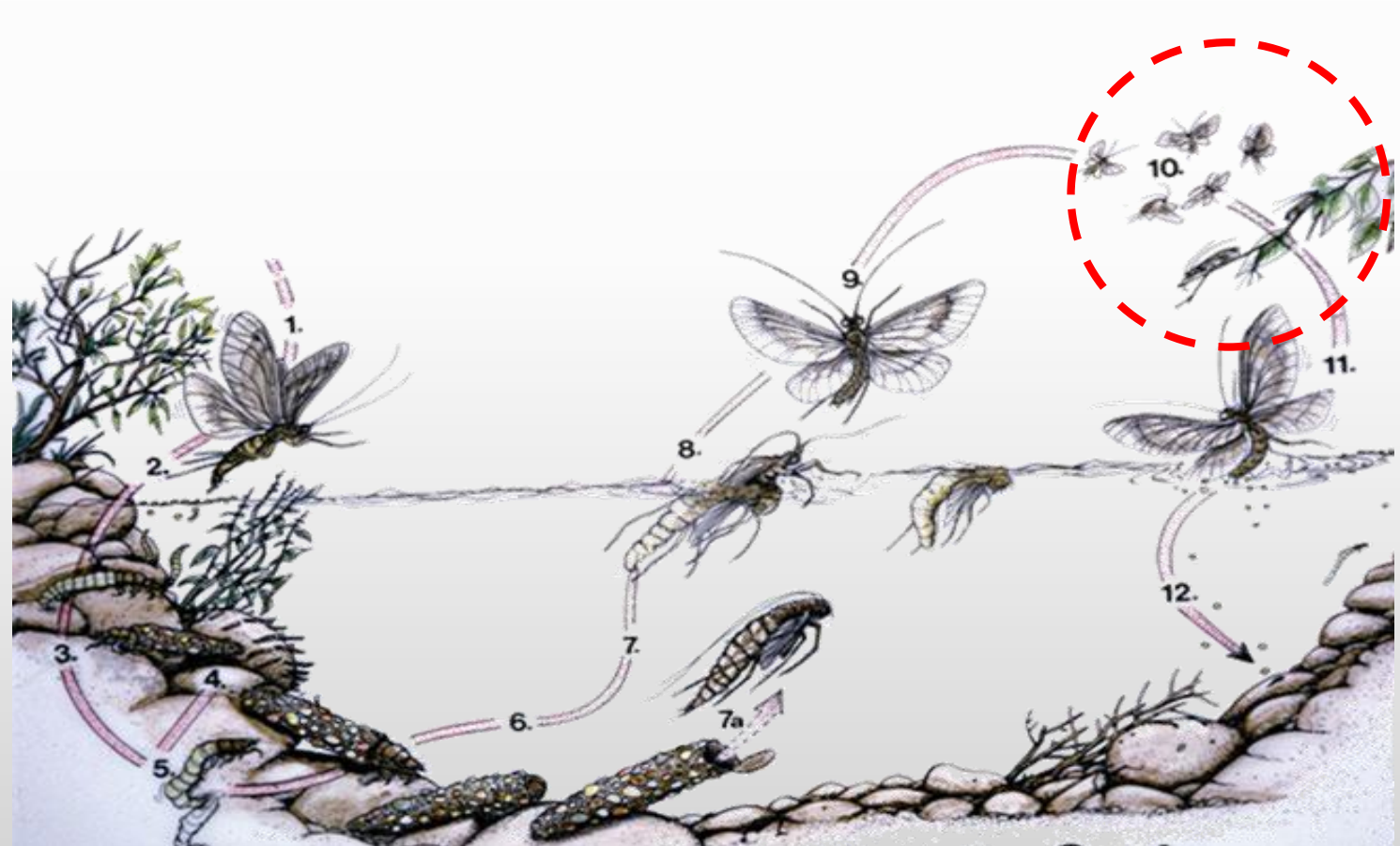
Emerger Pupa Stage – Iris Caddis





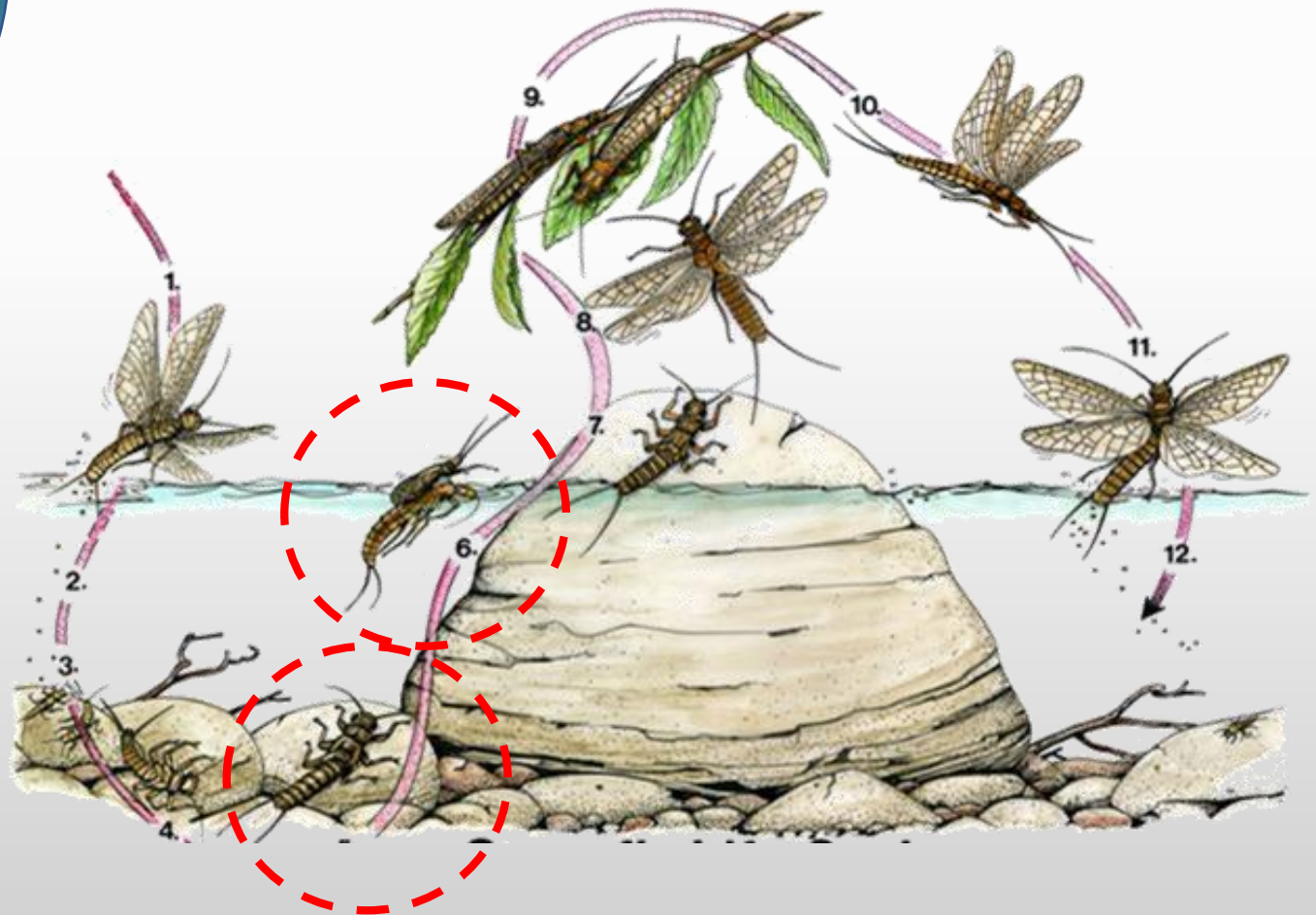
Caddis Imposters

Adult Stage – Elk Hair Caddis



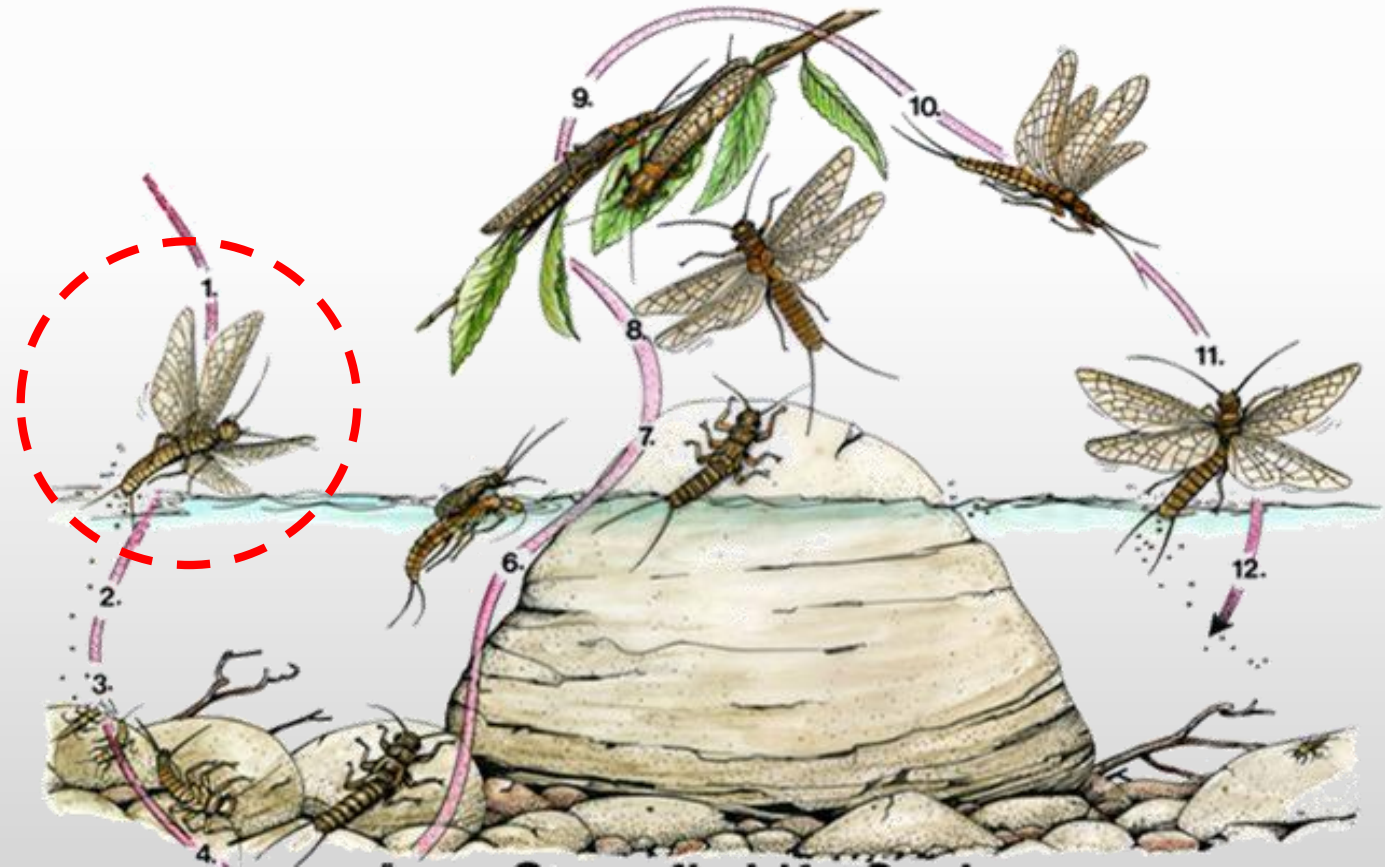
Stonefly Imposters

Nymph Stage – Black, Olive or Tan



Stonefly Imposters

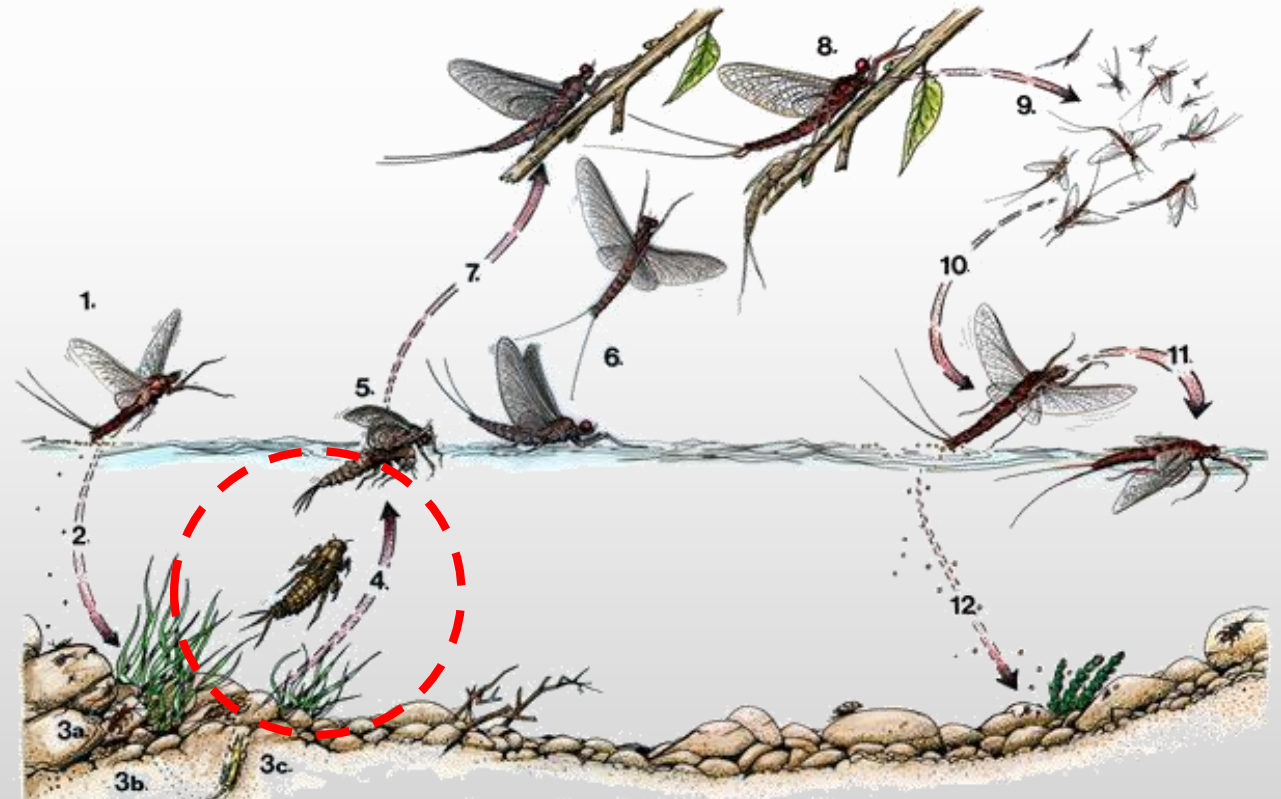
Adult Stage – Stimulator





Mayfly Imposters

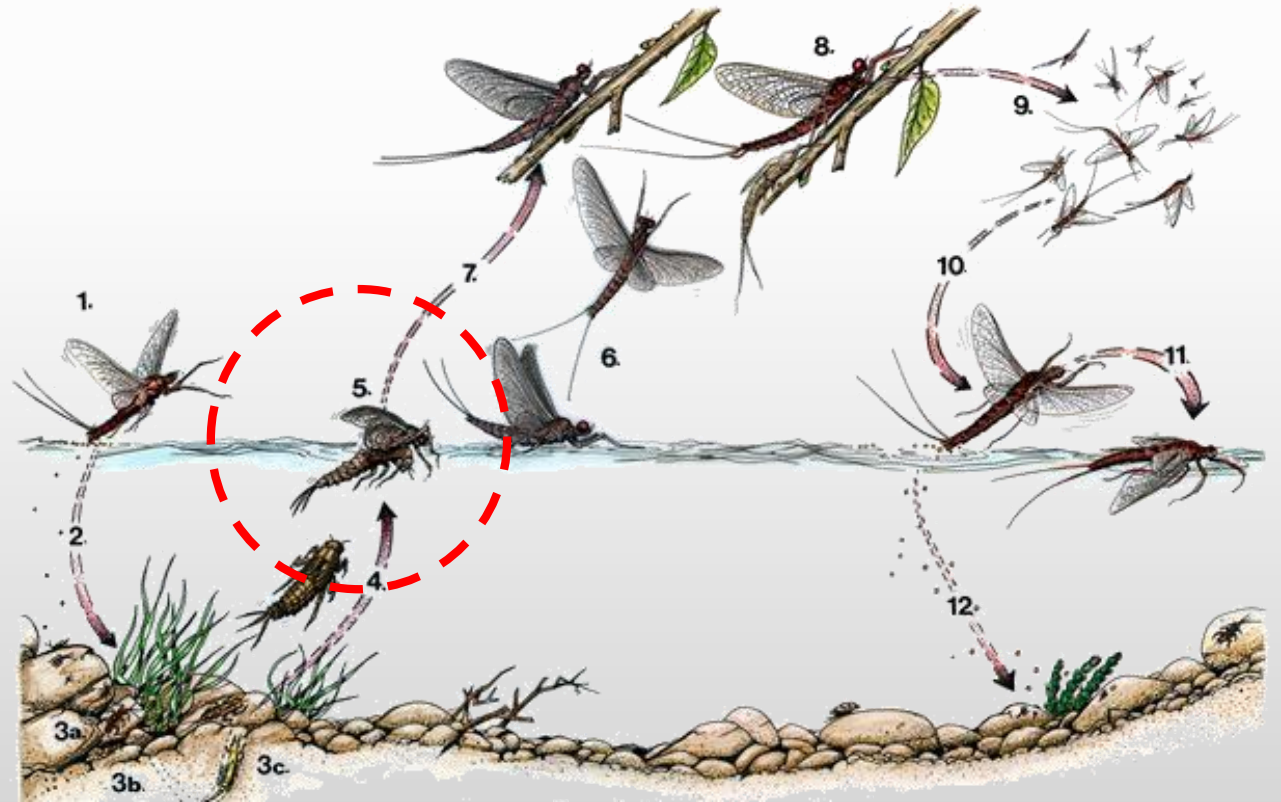
*Nymph Stage – Flashback Pheasant Tail
or Hare's Ear*





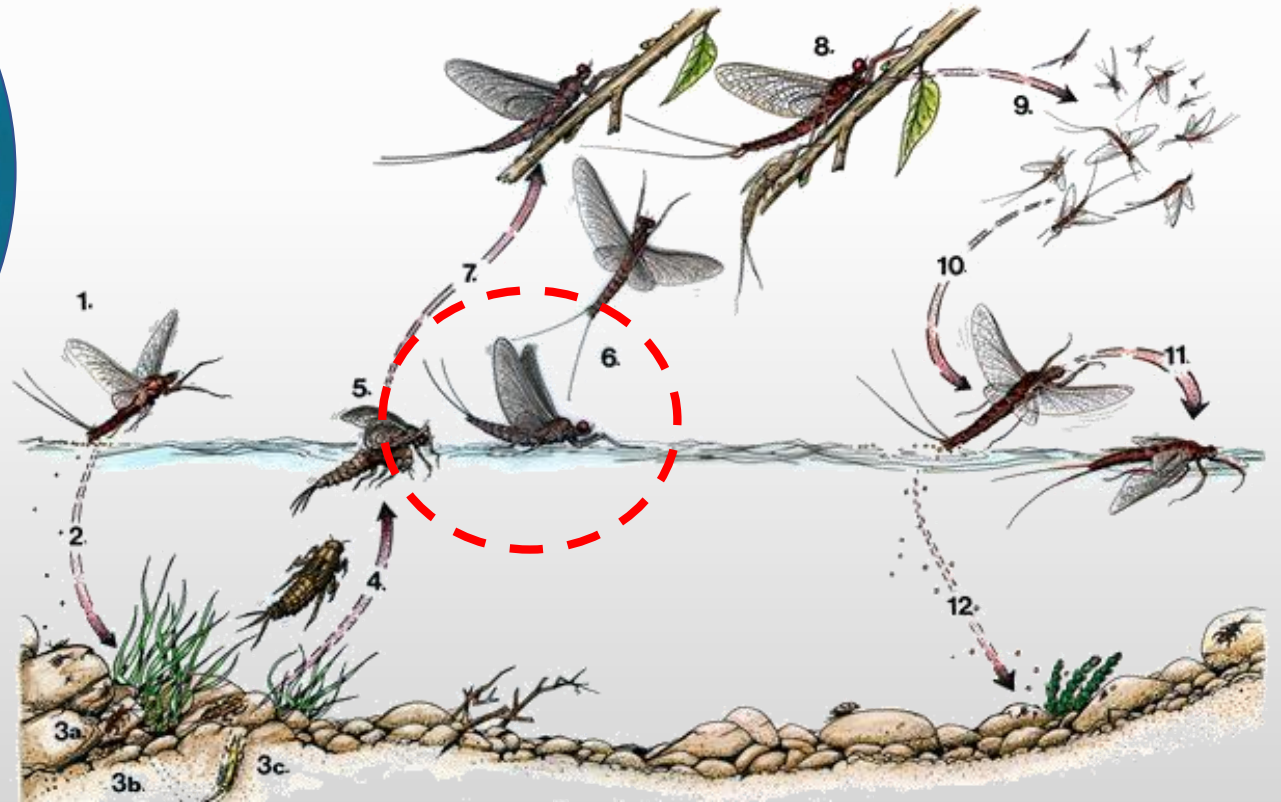
Mayfly Imposters

Emerger Stage – CDC Emerger and Soft Hackle Pheasant Tail Emerger



Mayfly Imposters

*Dun Sub-Adult Stage – Black Parachute -
Parachute Adams & Sulfur Comparadun*



Mayfly Imposters

Spent Stage – CDC BWO Spinner

